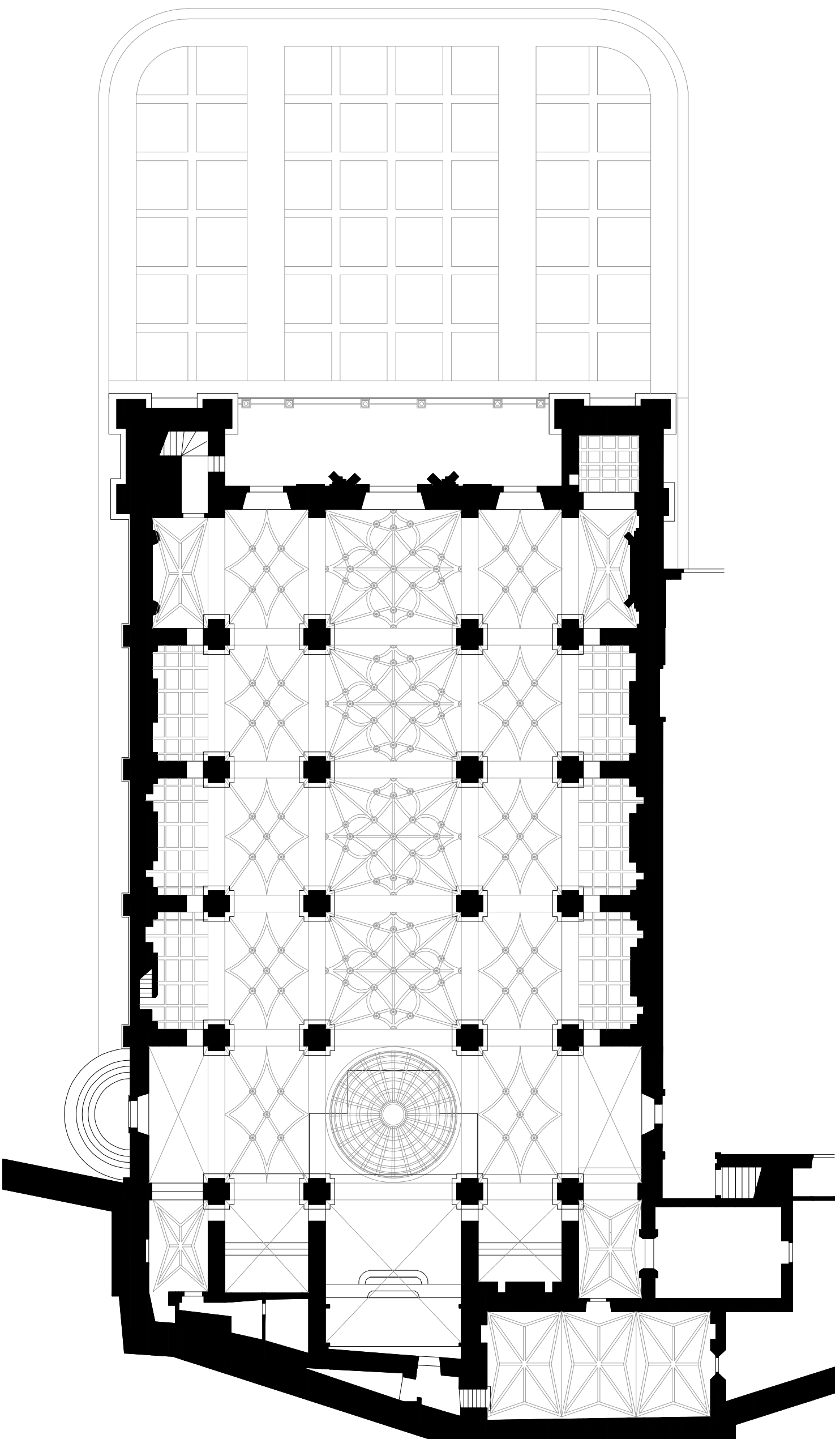


Levantamento da SÉ DE PORTALEGRE

Desenhos de autor



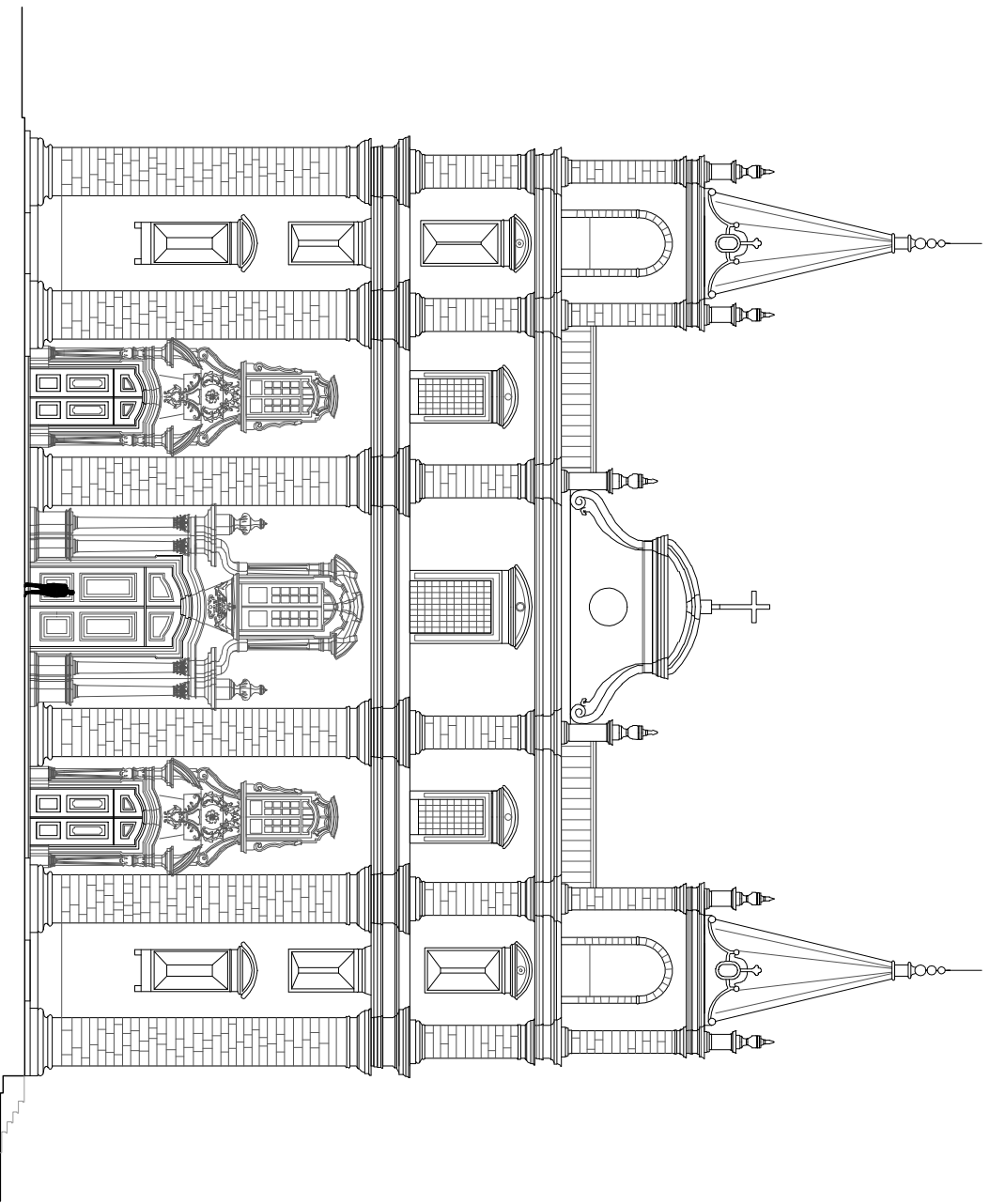
0 1 2 5 10 metros



As Sés Joaninas _ Arquitectura episcopal portuguesa na segunda metade do século XVI
Sé de Portalegre _ Planta

Escala 1:250

Folha 1/7



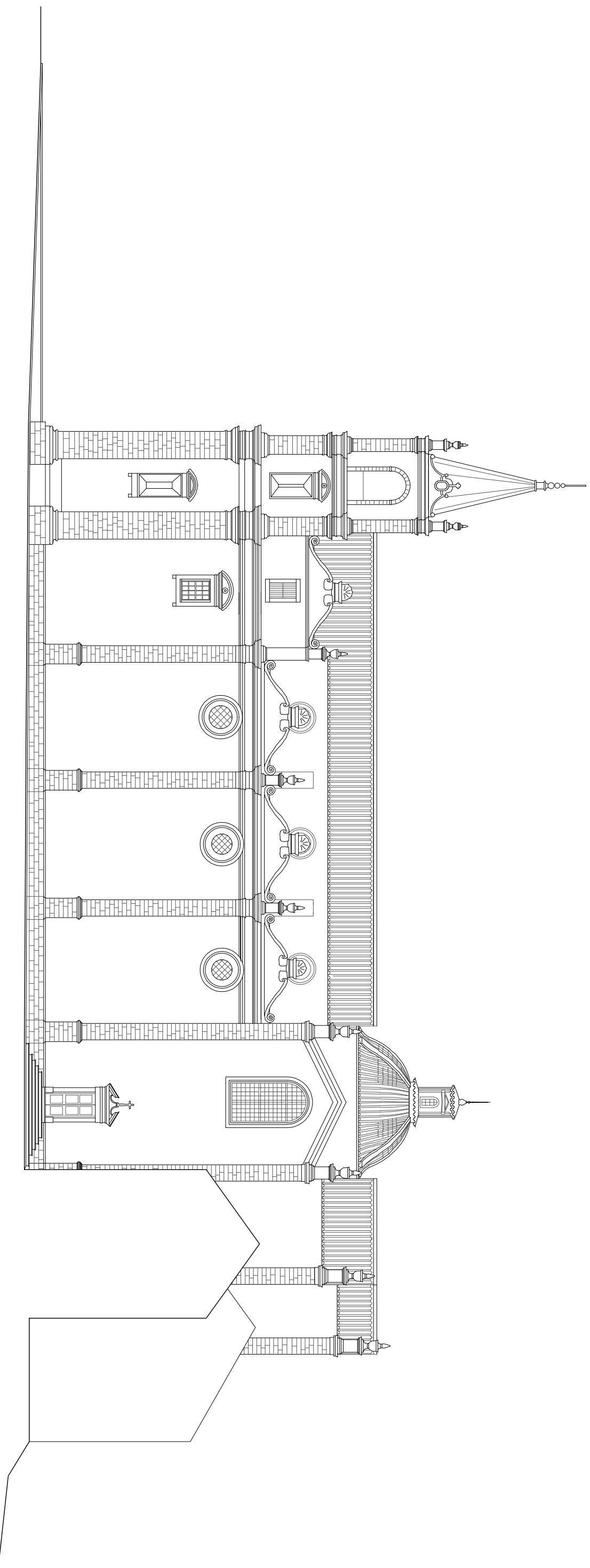
0 1 2 5 10 braças

As Sés Joaninas _ Arquitectura episcopal portuguesa na segunda metade do século XVI

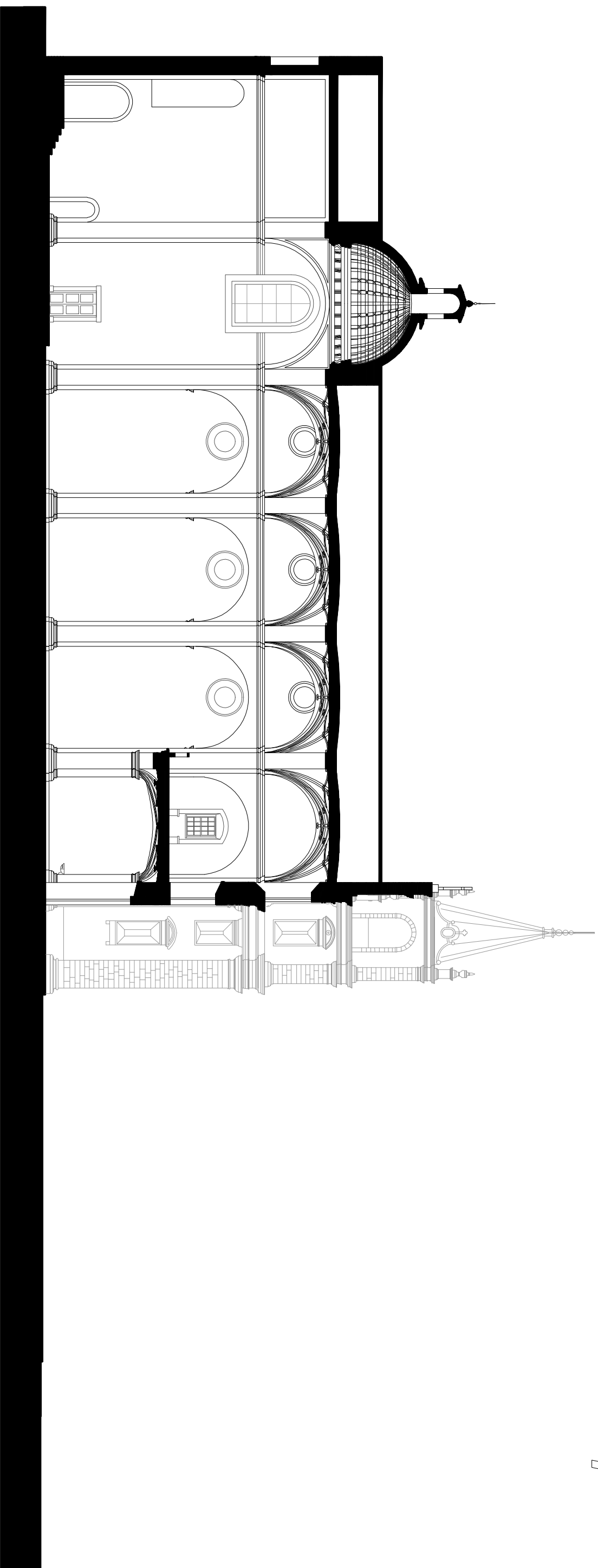
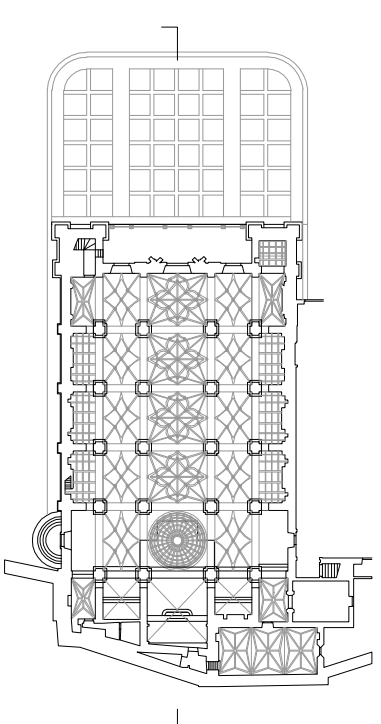
Sé de Portalegre _ Algado principal

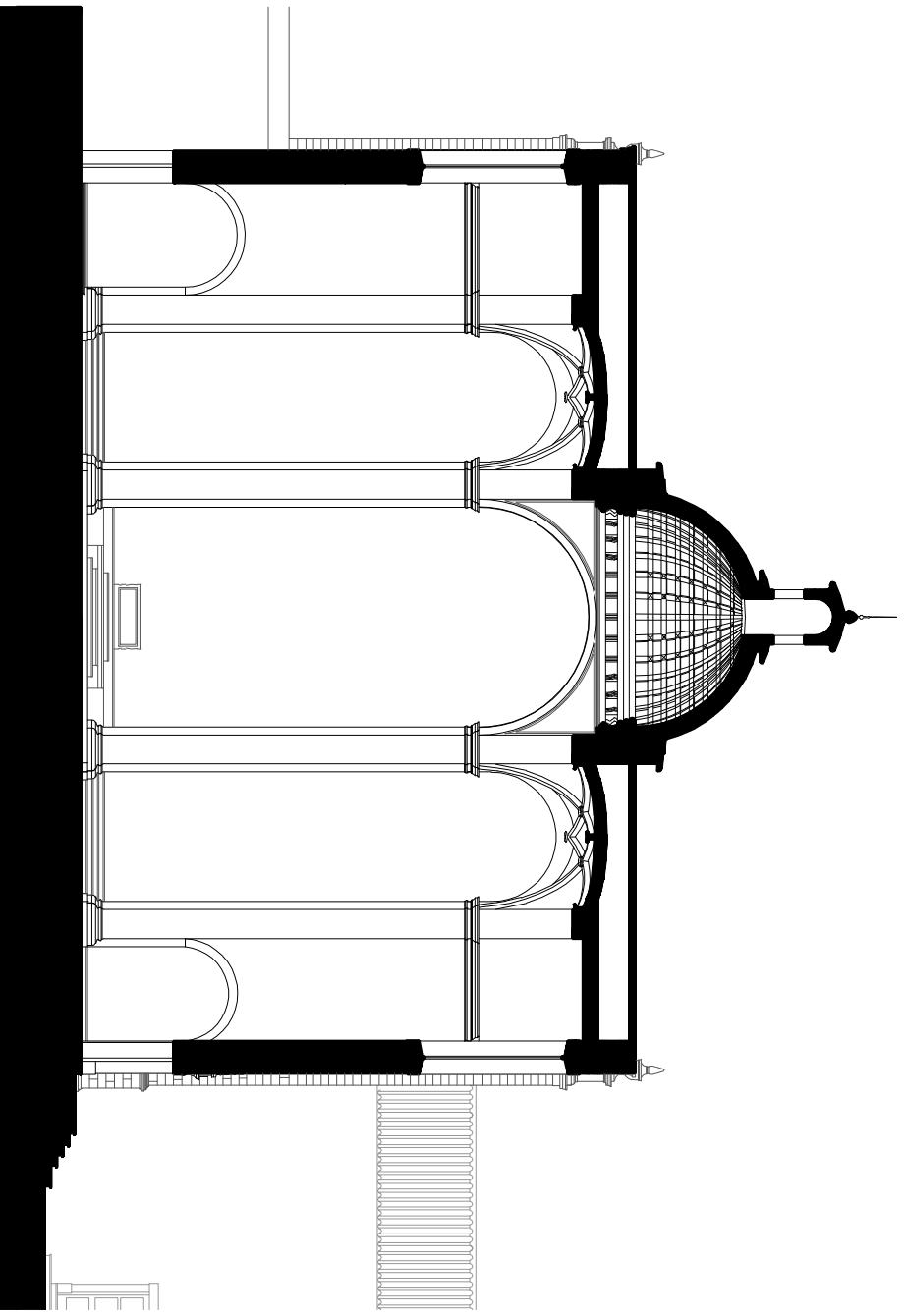
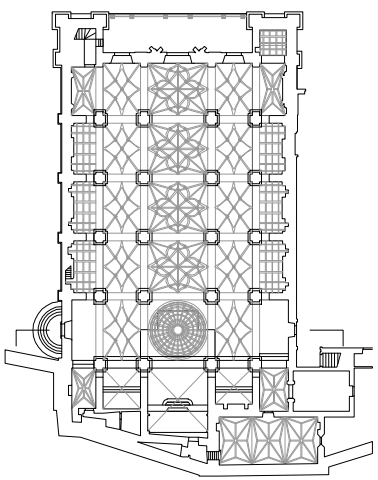
Escala 1:250

Folha 27



0 1 2 5 10 braguesas



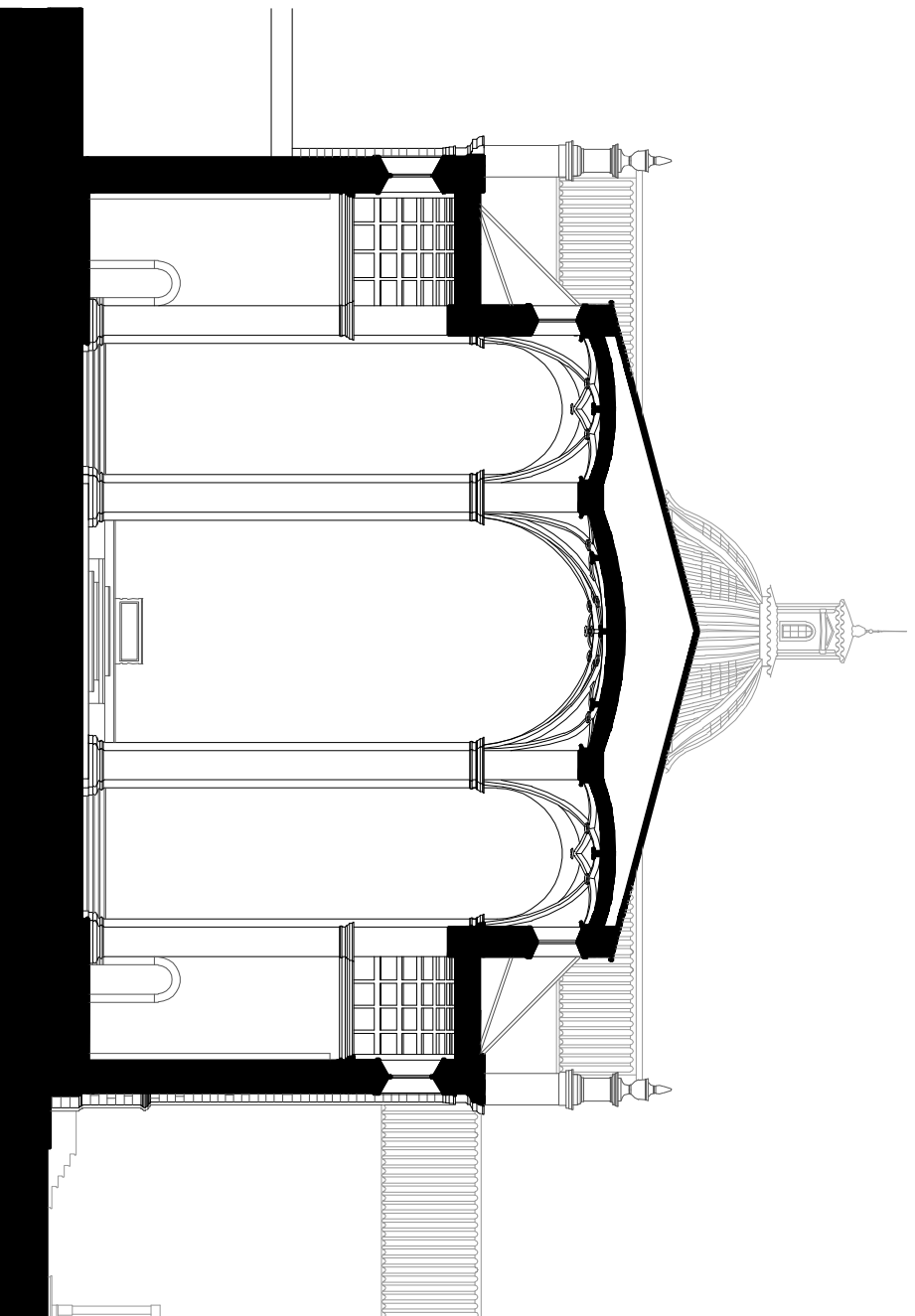
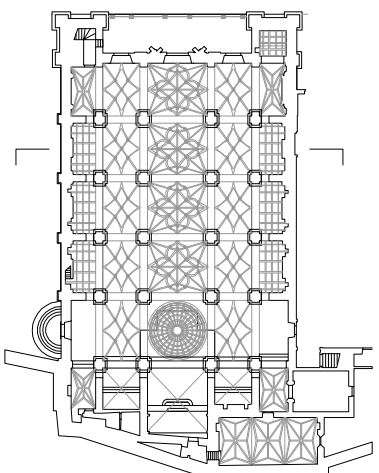


As Sés Joaninas _ Arquitectura episcopal portuguesa na segunda metade do século XVI

Sé de Portalegre _ Corte transversal pelo transepto

Escala 1:250

Folha 5/7

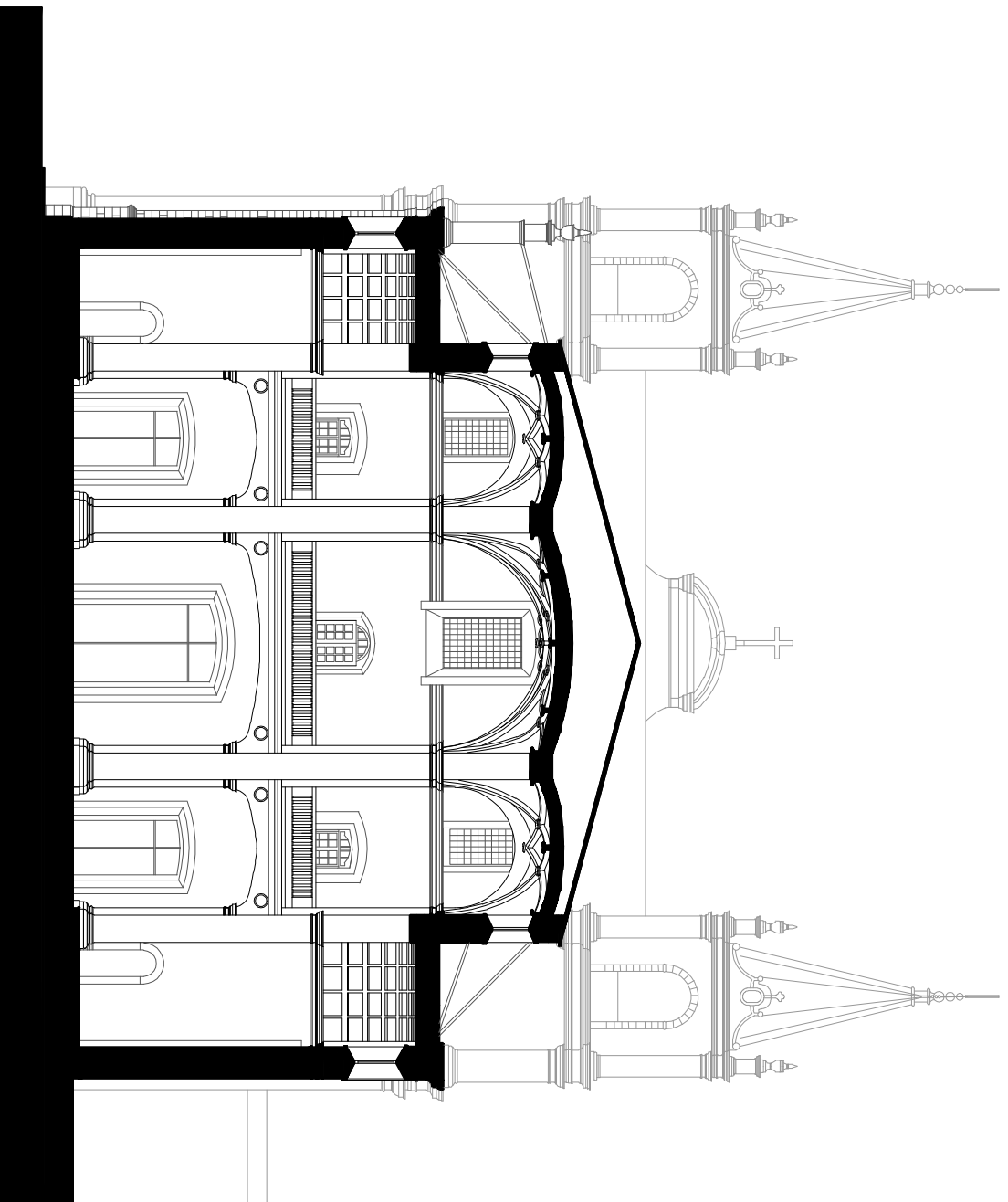
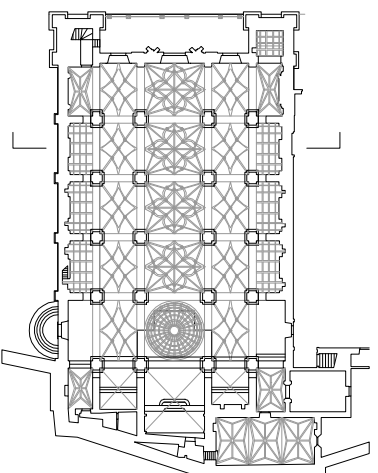


As Sés Joanninas _ Arquitectura episcopal portuguesa na segunda metade do século XVI

Sé de Portalegre _ Corte transversal pelo corpo das naves

Escala 1:250

Folha 67



As Sés Joaninas _ Arquitectura episcopal portuguesa na segunda metade do século XVI

Sé de Portalegre _ Corte transversal no sentido da entrada

Escala 1:250

Folha 7/7