

Interactions of Cationic and Neutral Molybdenum Complexes with β -Cyclodextrin Host Molecules

Sérgio Lima,[†] Isabel S. Gonçalves,^{*,†,‡} Paulo Ribeiro-Claro,^{†,§} Martyn Pillinger,[†] André D. Lopes,[†] Paula Ferreira,[†] José J. C. Teixeira-Dias,^{*,†} João Rocha,[†] and Carlos C. Romão^{||}

Department of Chemistry, University of Aveiro, Campus de Santiago, 3810-193 Aveiro, Portugal, Química-Física Molecular, Faculdade de Ciências e Tecnologia, Universidade de Coimbra, 3004-353 Coimbra, Portugal, and Instituto de Tecnologia Química e Biológica, Quinta do Marquês, EAN, Apt 127, 2781-901 Oeiras, Portugal

Received December 27, 2000

The inclusion compounds formed between β -cyclodextrin (β -CD) and the tetrafluoroborate salts $[\text{Cp}'\text{Mo}(\eta^4\text{-C}_6\text{H}_8)(\text{CO})_2][\text{BF}_4]$ and the neutral derivatives $\text{Cp}'\text{Mo}(\eta^3\text{-C}_6\text{H}_7)(\text{CO})_2$ [$\text{Cp}' = \text{Cp}$ ($\eta^5\text{-C}_5\text{H}_5$), Ind ($\eta^5\text{-C}_9\text{H}_7$)] were studied by means of elemental analysis, FTIR spectroscopy, thermogravimetric analysis (TGA), powder X-ray diffraction (XRD), and magic-angle spinning (MAS) NMR (^{13}C , ^{11}B). Additional information concerning the possible structure of the inclusion compounds was obtained from ab initio calculations using a two-layer approximation. The cationic and neutral η^5 -cyclopentadienyl analogues form stable two-to-one (host-to-guest) channel-type inclusion compounds in a crystalline state. By contrast, the η^5 -indenyl analogues form only weak complexes with β -CD and it is evident that the organometallic guests are easily liberated from the host cavities. The ab initio calculations revealed that the steric hindrance arising from the presence of the indenyl ligand is a possible explanation for the experimentally observed lower stability of these compounds.

Introduction

The past few years have witnessed an increasing effort toward the modification of steric, electronic, and other properties of well-known organometallic first sphere ligands as a means of achieving tuneable reactivity control of their complexes.¹ An interesting extension of this concept is the introduction of a second sphere ligand noncovalently attached to the first sphere ligand. This situation arises, for example, when an organometallic molecule (the guest) is encapsulated within a supramolecular host. Cyclodextrins (CD) are a group of macrocyclic oligosaccharides that are well-known to form such inclusion complexes.² They selectively bind a variety of metalloorganic and organometallic molecules bearing hydrophobic ligands such as cyclopentadienyl (Cp) and η^6 -arene groups.³ Second sphere coordination adducts have been reported with ferrocene and its derivatives,⁴ titanocene dihalides,⁵ aromatic ruthenium complexes,⁶ mixed sandwich complexes such as $[(\eta^5\text{-C}_5\text{H}_5)\text{Fe}(\eta^6\text{-C}_6\text{H}_6)][\text{PF}_6]$,⁷ and half-sandwich complexes such as $\text{CpFe}(\text{CO})_2\text{X}$ ($\text{X} = \text{Cl}$, Me),^{8,9} $\text{CpMn}(\text{CO})_3$,¹⁰ $(\eta^6\text{-C}_6\text{H}_6)\text{Cr}(\text{CO})_3$,¹¹ and $\text{Cp}'\text{Mo}(\eta^3\text{-C}_3\text{H}_5)(\text{CO})_2$ ($\text{Cp}' = \text{Cp}$, Ind).¹²

Half-sandwich complexes encapsulated within CDs have been shown to exhibit markedly different physical and chemical properties compared to those of the bulk material, for example, in their nonlinear optical properties¹³ and ligand substitution/insertion reactions.⁸ Also, metallocenes such as Cp_2MCl_2 ($\text{M} = \text{Ti}$, Mo) are potent organometallic antitumor agents¹⁴ and CD inclusion compounds are interesting for pharmaceutical use.⁵ The driving forces for the inclusion complexation of CD with

(4) Breslow, R.; Trainor, G.; Ueno, A. *J. Am. Chem. Soc.* **1983**, *105*, 2739. (b) Harada, A.; Takahashi, S. *J. Chem. Soc., Chem. Commun.* **1984**, 645. (c) Harada, A.; Hu, Y.; Yamamoto, S.; Takahashi, S. *J. Chem. Soc., Dalton Trans.* **1988**, 729. (d) Odagaki, Y.; Hirotsu, K.; Higuchi, T.; Harada, A.; Takahashi, S. *J. Chem. Soc., Perkin Trans. 1* **1990**, 1230. (e) Imashiro, F.; Kuwahara, D.; Kitazaki, N.; Terao, T. *Magn. Reson. Chem.* **1992**, *30*, 796. (f) Kuwahara, D.; Imashiro, F.; Terao, T. *Chem. Phys. Lett.* **1993**, *204*, 533. (g) Bakhtiar, R.; Kaifer, A. E. *Rapid Commun. Mass Spectrom.* **1998**, *12*, 111. (h) Ferreira, P.; Gonçalves, I. S.; Pillinger, M.; Rocha, J.; Santos, P.; Teixeira-Dias, J. J. C. *Organometallics* **2000**, *19*, 1455.

(5) Turel, I.; Demsar, A.; Kosmrlj, J. *J. Mol. Recognit. Macro. Chem.* **1999**, *35*, 595.

(6) Meister, G.; Stoeckli-Evans, H.; Süß-Fink, G. *J. Organomet. Chem.* **1993**, *453*, 249.

(7) (a) Klingert, B.; Rihs, G. *Organometallics* **1990**, *9*, 1335. (b) Klingert, B.; Rihs, G. *J. Inclusion Phenom.* **1991**, *10*, 255. (c) Klingert, B.; Rihs, G. *J. Chem. Soc., Dalton Trans.* **1991**, 2749.

(8) (a) Shimada, M.; Harada, A.; Takahashi, S. *J. Chem. Soc., Chem. Commun.* **1991**, 263. (b) Patel, P. P.; Welker, M. E. *J. Organomet. Chem.* **1997**, *547*, 103.

(9) Díaz, C.; Arancibia, A. *J. Inclusion Phenom. Mol. Recognit.* **1998**, *30*, 127.

(10) Song, L.; Meng, Q.; You, X. *J. Organomet. Chem.* **1995**, *498*, C1.

(11) Harada, A.; Saeki, K.; Takahashi, S. *Organometallics* **1989**, *8*, 730.

(12) Braga, S. S.; Gonçalves, I. S.; Lopes, A. D.; Pillinger, M.; Rocha, J.; Romão, C. C.; Teixeira-Dias, J. J. C. *J. Chem. Soc., Dalton Trans.* **2000**, 2964.

(13) Eaton, D. F.; Anderson, A. G.; Tam, W.; Wang, Y. *J. Am. Chem. Soc.* **1987**, *109*, 1886.

[†] University of Aveiro.

[‡] E-mail: igoncalves@dq.ua.pt. Fax: +351-234-370084.

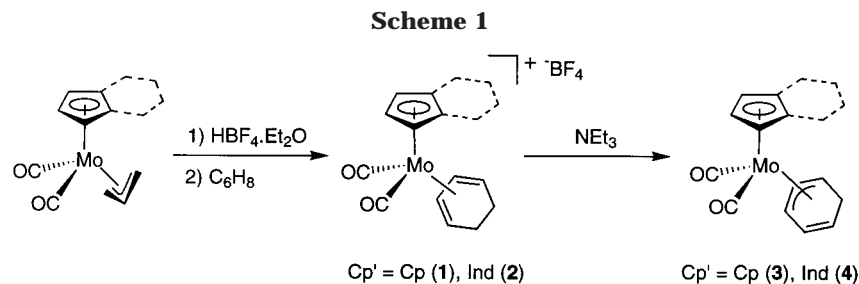
[§] Universidade de Coimbra.

^{||} Instituto de Tecnologia Química e Biológica.

(1) Romão, C. C. *Appl. Organomet. Chem.* **2000**, *14*, 539 and references therein.

(2) (a) Szejtli, J. *Chem. Rev.* **1998**, *98*, 1743. (b) Saenger, W. *Angew. Chem., Int. Ed. Engl.* **1980**, *19*, 344.

(3) Fenyvesi, E.; Szente, L.; Russel, N. R.; McNamara, M. In *Comprehensive Supramolecular Chemistry*; Atwood, J. L., Davies, J. E. D., MacNicol, D. D., Vögtle, F., Lehn, J.-M., Szejtli, J., Osa, T., Eds.; Pergamon: Oxford, 1996; Vol. 3, Chapter 10.



substrates are attributed to several factors, such as van der Waals forces, hydrophobic interactions, electronic effects, and steric factors.^{15,16} Theory has been extensively applied to the problem of predicting the formation and geometry of CD–guest inclusion systems. In this paper, we describe a combined experimental and theoretical study of the interaction of β -cyclodextrin with the dicarbonyl molybdenum complexes $\text{Cp}'\text{Mo}(\eta^3\text{-C}_6\text{H}_7)(\text{CO})_2$ and $[\text{Cp}'\text{Mo}(\eta^4\text{-C}_6\text{H}_8)(\text{CO})_2][\text{BF}_4]$ ($\text{Cp}' = \text{Cp}, \text{Ind}$). Complexes such as these are important in stereoselective organic syntheses.^{17–19} The present work aims to rationalize the contrasting inclusion complexation behaviors observed.

Results and Discussion

1. Preparation of the Diene and Allylmolybdenum Complexes.

The chemistry of diene and dienyl–Mo complexes has been intensively investigated and has considerable potential in organic synthesis. Diene complexes have played an important role in activation/functionalization of the unsaturated ligands. This chemistry is well-known for the fragment $[\text{Cp}'\text{Mo}(\text{CO})_2]^+$ [$\text{Cp}' = \text{Cp}, \eta^5\text{-C}_5\text{Me}_5$ (Cp^*), Ind], including aspects such as the regioselectivity of nucleophilic attack at the 18-electron cations $[\text{Cp}'\text{Mo}(\eta^4\text{-diene})(\text{CO})_2]^+$,¹⁷ the formation of diene complexes from $\text{Cp}'\text{Mo}(\eta^3\text{-allyl})(\text{CO})_2$ complexes,¹⁸ and the deprotonation of $[\text{Cp}'\text{Mo}(\eta^4\text{-diene})(\text{CO})_2]^+$ to give allylic species $\text{Cp}'\text{Mo}(\eta^3\text{-allyl})(\text{CO})_2$.¹⁹

The well-known cation in $[\text{Cp}'\text{Mo}(\eta^4\text{-C}_6\text{H}_8)(\text{CO})_2][\text{BF}_4]$ (**1**) was prepared as described recently by some of us.^{19g}

(14) (a) Kuo, L. Y.; Kanatzidis, M. G.; Sabat, M.; Tipton, A. L.; Marks, T. J. *J. Am. Chem. Soc.* **1991**, *113*, 9027. (b) Harding, M. M.; Mokdsi, G.; Mackay, J. P.; Prodigalidad, M.; Lucas, S. W. *Inorg. Chem.* **1998**, *37*, 2432.

(15) Connors, K. A. *Chem. Rev.* **1997**, *97*, 1325.

(16) Szejtli, J. In *Comprehensive Supramolecular Chemistry*; Atwood, J. L., Davies, J. E. D., Macnicol, D. D., Vögtle, F., Lehn, J.-M., Szejtli, J., Osa, T., Eds.; Pergamon: Oxford, 1996; Vol. 3, Chapter 5.

(17) (a) Kane-Maguire, L. A. P.; Honig, E. D.; Sweigart, D. A. *Chem. Rev.* **1984**, *84*, 525. (b) Pearson, A. J.; Khan, Md. N. I.; Clardy, J. C.; Cun-heng, H. *J. Am. Chem. Soc.* **1985**, *107*, 2748. (c) Green, M.; Greenfield, S.; Kersting, M. *J. Chem. Soc., Chem. Commun.* **1985**, 18. (d) Pearson, A. J. *Adv. Met. Org. Chem.* **1989**, *1*, 1. (e) Pearson, A. J.; Blystone, S. L.; Nar, H.; Pinkerton, A. A.; Roden, B. A.; Yoon, J. *J. Am. Chem. Soc.* **1989**, *111*, 134.

(18) Faller, J. W.; Murray, H. H.; White, D. L.; Chao, K. H. *Organometallics* **1983**, *2*, 400.

(19) (a) Baxter, J. S.; Green, M.; Lee, T. V. *J. Chem. Soc., Chem. Commun.* **1989**, 1595. (b) Feldman, J.; Calabrese, J. C. *J. Chem. Soc., Chem. Commun.* **1991**, 134. (c) Wang, S.-H.; Cheng, Y.-C.; Lee, G.-H.; Peng, S.-M.; Liu, R.-S. *Organometallics* **1993**, *12*, 3282. (d) Wang, T.-F.; Lee, M.-C.; Wen, Y.-S. *J. Organomet. Chem.* **1994**, *483*, 91. (e) Félix, V.; Calhorda, M. J.; Drew, M. G. B.; Gonçalves, I. S.; Romão, C. C. *Inorg. Chim. Acta* **1998**, *275–276*, 263. (f) Ascenso, J. R.; Azevedo, C. G.; Gonçalves, I. S.; Herdtweck, E.; Moreno, D. S.; Romão, C. C.; Zühlke, J. *Organometallics* **1994**, *13*, 429. (g) Ascenso, J. R.; de Azevedo, C. G.; Gonçalves, I. S.; Herdtweck, E.; Moreno, D. S.; Pessanha, M.; Romão, C. C. *Organometallics* **1995**, *14*, 3901. (h) Almeida, J. M.; Gonçalves, I. S.; Romão, C. C. *An. Quim. Int. Ed.* **1997**, *93*, 8. (i) Benyunes, S. A.; Binelli, A.; Green, M.; Grimshire, M. J. *J. Chem. Soc., Dalton Trans.* **1991**, 895.

This involves the protonation of $\text{Cp}'\text{Mo}(\eta^3\text{-C}_3\text{H}_5)(\text{CO})_2$ with $\text{HBF}_4 \cdot \text{Et}_2\text{O}$ in CH_2Cl_2 to give a red solution of $[\text{Cp}'\text{Mo}(\eta^2\text{-C}_3\text{H}_6)(\text{CO})_2(\text{F}_3\text{B})]$.²⁰ Addition of 1,3-cyclohexadiene to this solution leads to the rapid formation of **1**. We have now extended this to the preparation of the indenyl analogue $[\text{IndMo}(\eta^4\text{-C}_6\text{H}_8)(\text{CO})_2][\text{BF}_4]$ (**2**) (Scheme 1). Compound **2** was originally prepared by Bottril and Green by reaction of the diene with $[\text{IndMo}(\text{CO})_2(\text{NCMe})_2][\text{BF}_4]$.²¹ Neither **1** nor **2** are very air sensitive, decomposing within a few hours when exposed to air. They are soluble in dichloromethane, ethanol, and acetone and precipitate from the reaction mixtures upon addition of diethyl ether, hexane, or pentane. They are slightly soluble in water.

Treatment of **1** and **2** with triethylamine in CH_2Cl_2 gives the neutral complexes $\text{Cp}'\text{Mo}(\eta^3\text{-C}_6\text{H}_7)(\text{CO})_2$ [$\text{Cp}' = \text{Cp}$ (**3**),^{17d,19c,d,g} Ind (**4**)] (Scheme 1). This preparation is advantageous over the one originally reported for **4**, which involved the treatment of **2** with $(\text{dppe})\text{Pt}(\text{OMe})_2$ [$\text{dppe} = 1,2\text{-bis}(\text{diphenylphosphino})\text{ethane}$].^{19b} The ¹H NMR spectrum of **4** exhibits a characteristic pattern for the resonances of the η^5 -indenyl rather than the ring-slipped η^3 -indenyl, i.e., one signal for the C₆ ring protons (H_{5–8}) at ca. δ 7.05 ppm, two signals at ca. δ 6.01 and 5.87 ppm (H₁ and H₃), and a triplet centered at δ 5.53 ppm (H₂).²² The ¹³C NMR spectrum also confirms the presence of $\eta^5\text{-C}_9\text{H}_7$ as the chemical shifts for the indenyl junction carbon atoms C_{4/9} (¹³C CP MAS NMR: δ 111.7 ppm) are at higher field than would be expected for $\eta^3\text{-C}_9\text{H}_7$.^{19h} In conclusion, the ring slippage of the C₆ ring, $\eta^5\text{-C}_6\text{H}_7 \rightarrow \eta^3\text{-C}_6\text{H}_7$, is easier than that of the indenyl system, $\eta^5\text{-C}_9\text{H}_7 \rightarrow \eta^3\text{-C}_9\text{H}_7$, as is also the case for the tropylium derivative $(\eta^5\text{-C}_9\text{H}_7)\text{Mo}(\eta^3\text{-C}_7\text{H}_7)(\text{CO})_2$.^{19h} In the IR spectrum, two bands are observed in the $\nu(\text{CO})$ stretching region consistent with the existence of only one isomer in the solid state (Table 1). Complexes **3** and **4** are soluble in dichloromethane, acetone, diethyl ether, hexane, or pentane and insoluble in water. They are stable at room temperature and can be handled in air for brief periods of time (several minutes).

2. Preparation and Characterization of Inclusion Compounds.

Mixing of a warm saturated solution of β -CD in water with a solution of $[\text{Cp}'\text{Mo}(\eta^4\text{-C}_6\text{H}_8)(\text{CO})_2][\text{BF}_4]$ [$\text{Cp}' = \text{Cp}$ (**1**), Ind (**2**)] or $\text{Cp}'\text{Mo}(\eta^3\text{-C}_6\text{H}_7)(\text{CO})_2$ [$\text{Cp}' = \text{Cp}$ (**3**), Ind (**4**)] in dichloromethane resulted in slow formation of a pale yellow precipitate at the interface between the two solutions. The products were isolated by filtration and rinsed with dichloromethane

(20) Markham, J.; Menard, K.; Cutler, A. *Inorg. Chem.* **1985**, *24*, 1581.

(21) Bottril, M.; Green, M. *J. Chem. Soc., Dalton Trans.* **1977**, 2365.

(22) Ascenso, J. R.; Gonçalves, I. S.; Herdtweck, E.; Romão, C. C. *J. Organomet. Chem.* **1996**, *508*, 169.

Table 1. IR Data (cm⁻¹) for Included and Nonincluded Dicarbonyl Complexes

complex	$\nu(\text{CO})^a$	$\Delta\nu(\text{CO})$	$\nu(\text{CO})^b$
[CpMo(η^4 -C ₆ H ₈)(CO) ₂][BF ₄] ^c 1	1998, 1937		1999, 1964
β -CD/[CpMo(η^4 -C ₆ H ₈)(CO) ₂][BF ₄] ^c 1a	2017, 1963	19, 26	
[IndMo(η^4 -C ₆ H ₈)(CO) ₂][BF ₄] ^c 2	1999, 1942		1997, 1966
β -CD/[IndMo(η^4 -C ₆ H ₈)(CO) ₂][BF ₄] ^c 2a	2044, 1997	45, 55	
CpMo(η^3 -C ₆ H ₇)(CO) ₂ ^d 3	1927, 1828		1936, 1869
β -CD/CpMo(η^3 -C ₆ H ₇)(CO) ₂ 3a	1940, 1865	13, 37	
IndMo(η^3 -C ₆ H ₇)(CO) ₂ 4	1933, 1839		1941, 1868
β -CD/IndMo(η^3 -C ₆ H ₇)(CO) ₂ 4a	1940, 1869	7, 30	

^a Solid-state KBr IR spectra (ν_{sym} , ν_{asym}). ^b Ab initio scaled harmonic wavenumbers (ν_{sym} , ν_{asym}). ^c Solution IR for **1** (CH₂Cl₂, cm⁻¹): 2016, 1961. ^d Solution IR for **3** (CH₂Cl₂, cm⁻¹): 1937, 1856.

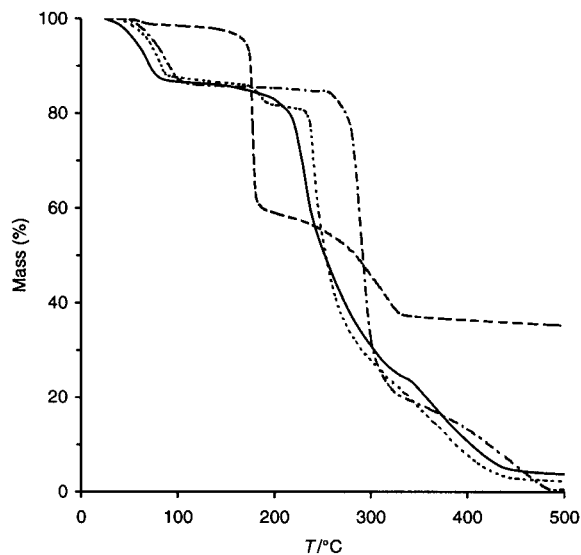


Figure 1. TGA of β -CD/[CpMo(η^4 -C₆H₈)(CO)₂][BF₄] (**1a**) (—), [CpMo(η^4 -C₆H₈)(CO)₂][BF₄] (**1**) (---), pristine β -CD hydrate (· · · ·), and a physical mixture of β -CD and **1** in a 2:1 molar ratio (— · — ·).

to remove the unchanged molybdenum complexes. Finally, the products were washed with water to remove any remaining pristine cyclodextrin hydrate and vacuum-dried. Elemental analyses indicated that compounds β -CD/[CpMo(η^4 -C₆H₈)(CO)₂][BF₄] (**1a**) and CD/CpMo(η^3 -C₆H₇)(CO)₂ (**3a**) were stoichiometric 2:1 (host to guest) inclusion compounds. The washing steps did not liberate the included guests from the cyclodextrin cavities. In the cases of β -CD/[IndMo(η^4 -C₆H₈)(CO)₂][BF₄] (**2a**) and β -CD/IndMo(η^3 -C₆H₇)(CO)₂ (**4a**), the corresponding inclusion compounds could not be obtained in an analytically pure form (see Experimental Section). This was attributed to liberation of a proportion of the included complexes by the washing steps. Compounds **1a–4a** are insoluble in water and air sensitive. After exposure to air for approximately 8 h, the cationic complexes change to blue and the neutral complexes change to green. The products were further characterized in the solid state by powder XRD, MAS NMR (¹³C, ¹¹B), TGA, and FTIR spectroscopy.

Thermogravimetric Analysis. Figure 1 shows the results of thermogravimetric analysis of β -CD/[CpMo(η^4 -C₆H₈)(CO)₂][BF₄] (**1a**), the organometallic [CpMo(η^4 -C₆H₈)(CO)₂][BF₄] (**1**), pristine β -CD hydrate, and a physical mixture of β -CD and **1** in a 2:1 molar ratio. TGA of β -CD shows loss of hydrated water up to 130 °C

Table 2. TGA and NMR Data (¹¹B and ¹³C MAS NMR) for Included and Nonincluded Dicarbonyl Complexes

complex	T ^a /°C	¹¹ B (ppm) ^b	¹³ C (CO) (ppm)
[CpMo(η^4 -C ₆ H ₈)(CO) ₂][BF ₄] 1	176	-1.4 (130)	229.7
β -CD/[CpMo(η^4 -C ₆ H ₈)(CO) ₂][BF ₄] 1a	230	-1.5 (50)	222.2
[IndMo(η^4 -C ₆ H ₈)(CO) ₂][BF ₄] 2	140	-1.0 (262)	229.9
β -CD/[IndMo(η^4 -C ₆ H ₈)(CO) ₂][BF ₄] 2a	234	-1.7 (225)	n/o ^c
CpMo(η^3 -C ₆ H ₇)(CO) ₂ ^d 3	115		237.0
β -CD/CpMo(η^3 -C ₆ H ₇)(CO) ₂ 3a	231		n/o
IndMo(η^3 -C ₆ H ₇)(CO) ₂ 4	117		240.4
β -CD/IndMo(η^3 -C ₆ H ₇)(CO) ₂ 4a	225		n/o

^a T = decomposition temperature (peak maximum in the differential thermogravimetric profile). ^b Full width at half-maximum (fwhm, Hz) given in parentheses. ^c Not observed. ^d ¹³C NMR (CDCl₃): δ 239.6, 235.3.

(14.4%, 10–11 water molecules per β -CD molecule), the maximum rate of mass loss occurring at 90 °C. There is no further change until 260 °C when the compound starts to melt and decompose, characterized by an intense, sharp peak in the differential thermogravimetric (DTG) profile at 287 °C. At 500 °C, 100% mass loss is complete. The organometallic **1** does not undergo any change until 160 °C but then decomposes abruptly. A mass loss of 40% is observed in the temperature range 160–180 °C, with the maximum rate of mass loss occurring at 176 °C. In the case of the mixture, each component behaves independently. Well-defined steps are visible in the TG profile corresponding to the points where the bulk organometallic decomposes (around 182 °C) and β -CD melts and decomposes (around 236 °C). The lower decomposing point of β -CD in the mixture compared to that of pure β -CD is presumably due to the promoting effects of molybdenum on the decomposition of cyclodextrin. In the case of the inclusion compound **1a**, there is no change up to 170 °C except for gradual loss of hydrated water between 25 and 80 °C. Decomposition occurs above this temperature, characterized by a strong, sharp peak in the DTG profile at 230 °C. Similar TG profiles were obtained for compounds **1a–4a** (see Table 2 for the decomposing points). These results indicate that the molybdenum complexes are thermally more stable in the β -CD adducts **1a–4a** compared to the bulk solids **1–4**, from which it can be inferred that the organometallic molecules in **1a–4a** are isolated from each other by at least partial encapsulation in the β -CD cavities.

Powder XRD. Compounds β -CD/[CpMo(η^4 -C₆H₈)(CO)₂][BF₄] (**1a**) and β -CD/CpMo(η^3 -C₆H₇)(CO)₂ (**3a**) present similar powder XRD patterns characterized by low angle peaks at about 14.7, 12.2, 9.0, and 7.4 Å (Figure 2). There is no indication for the presence of bulk crystalline organometallic components (**1** or **3**), and only a small amount of β -CD hydrate is present as evidenced by the weak reflections at 8.3 and 7.05 Å. Figure 2 also shows a simulated powder diffraction pattern calculated from the crystal structure data for the 2:1 (host:guest) β -CD inclusion compound of [(η^5 -C₅H₅)Fe(η^6 -C₆H₅R)]-[PF₆] (R = mesitylene).^{7c} This compound exhibits the typical channel-type structure consisting of head-to-head dimers of β -CD molecules stacked along the crystallographic *c* axis.^{7c} The exact orientation of the guest molecules could not be determined due to disorder. There is a good match between the calculated pattern

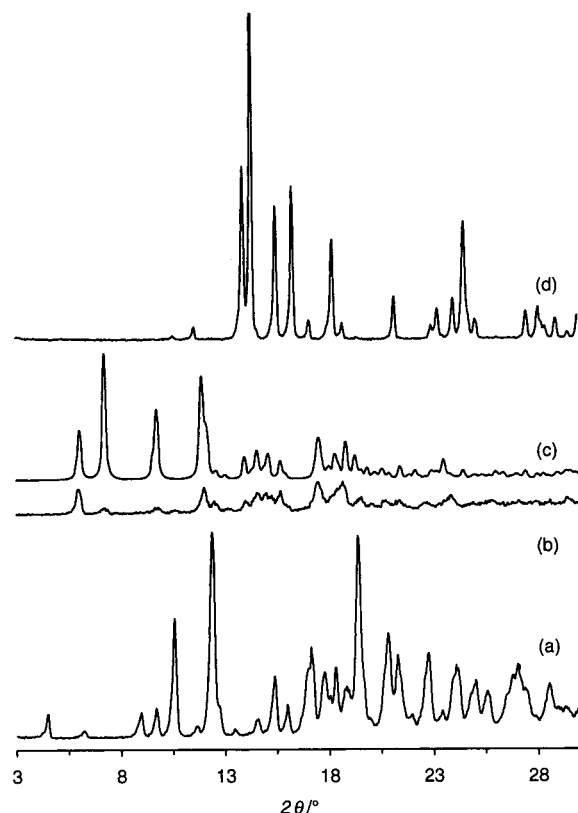


Figure 2. Powder XRD of (a) pristine β -CD hydrate, (b) β -CD/[CpMo(η^4 -C₆H₈)(CO)₂][BF₄] (**1a**), (c) β -CD/[(η^5 -C₅H₅)Fe(η^6 -C₆H₅R)][PF₆] (R = mesitylene), and (d) [CpMo(η^4 -C₆H₈)(CO)₂][BF₄] (**1**). The program PowderCell²³ was used to produce the simulated pattern (c) from the crystal structure data for the 2:1 inclusion compound formed between β -CD and [(η^5 -C₅H₅)Fe(η^6 -C₆H₅R)][PF₆].^{7c}

and the pattern of compound **1a**, especially at low angles (3–20 $2\theta^\circ$). This implies that the β -CD adducts **1a** and **3a** are channel-type inclusion compounds closely related to those reported by Klingert and Rihs.^{7c} Previous powder XRD studies have shown that β -CD also forms channel-type inclusion compounds with the molybdenum complexes Cp'Mo(η^3 -C₃H₅)(CO)₂ [Cp' = Cp, Ind]¹² and the [1]ferrocenophane complex [Fe{(η^5 -C₅H₄)₂-SiMe₂}].^{4h}

A different result was obtained for compounds **2a** and **4a**. These provided powder XRD patterns (not shown) quite similar to that of the host structure. This suggests that the major phase in both samples comprises β -CD molecules arranged in a herringbone-type pattern, as found in either pristine β -CD hydrate or β -CD inclusion compounds with small alcohols.²⁴ An additional weak reflection at 12.35 Å may be indicative of a minor phase consisting of a channel-type inclusion compound as described above.

IR Spectroscopy. The KBr IR spectra of compounds **1a–4a** show the typical bands previously reported for bulk KBr spectra of β -CD, indicating no chemical modification of the cyclodextrin host.²⁵ In addition, some characteristic absorption bands of the guest are observed. The presence of a *cis*-M(CO)₂ unit is clear from

the observed IR data which show, in all cases, two bands in the expected ν (CO) stretching region (Table 1). These spectra were different from those of the pure organometallics **1–4** in the solid state, which exhibit broader bands probably due to intermolecular interactions (CH \cdots O and CH \cdots π contacts, which are known to be present in carbonyl/Cp-containing organometallics²⁶). Furthermore, the ν (CO) stretching vibrations of the included complexes were shifted by 7–55 cm⁻¹ to higher frequency compared to those of the nonincluded complexes in the solid state. Indeed, the observed frequencies for β -CD/[CpMo(η^4 -C₆H₈)(CO)₂][BF₄] (**1a**) and β -CD/CpMo(η^3 -C₆H₇)(CO)₂ (**3a**) approach those observed for the corresponding organometallic (**1** or **3**) dissolved in dichloromethane (Table 1). These results indicate that the guest complexes are isolated from each other in the cyclodextrin cavities as in solution (a situation that is also suggested by the ab initio calculations, discussed below).

MAS NMR Spectroscopy. The solid-state ¹¹B MAS NMR spectra of β -CD/[CpMo(η^4 -C₆H₈)(CO)₂][BF₄] (**1a**) and β -CD/[IndMo(η^4 -C₆H₈)(CO)₂][BF₄] (**2a**) contain single peaks at -1.5 and -1.7 ppm, respectively (Table 2). The sharp line widths, especially for **1a** (full width at half-maximum, fwhm, ca. 50 Hz), imply that boron is in a very symmetrical environment, i.e., tetrahedral BF₄⁻ species. The corresponding resonances for the nonincluded organometallics **1** and **2** appear downfield relative to those for **1a** and **2a** and are also significantly broader.

The solid-state ¹³C CP MAS NMR spectra of β -CD/[CpMo(η^4 -C₆H₈)(CO)₂][BF₄] (**1a**), the organometallic **1**, and pristine β -CD hydrate are shown in Figure 3. The different carbon resonances of β -CD in **1a** are assigned to C-1 (101–104 ppm), C-4 (78–84 ppm), C-2,3,5 (71–76 ppm), and C-6 (59–64 ppm). The existence of multiple resonances for each type of carbon atom is mainly correlated with different torsion angles about the (1→4) linkages for C-1 and C-4^{27,28} and with torsion angles describing the orientation of the hydroxyl groups.²⁹ Concerning these resonances, the spectrum of **1a** (Figure 3c) differs from that of pristine β -CD hydrate (Figure 3a) in that the resonances for **1a** are broader, becoming almost single peaks for C-1 and C-2,3,5. This is evidence of inclusion of a guest molecule in the β -CD cavity, as it implies that β -CD adopts a more symmetrical conformation in the complex **1a**, with each glucose unit in a more similar environment. Additional peaks in the spectrum are readily assigned to the resonances of the carbon atoms of the guest molecule. The Cp and η^4 -coordinated cyclohexadiene groups give rise to peaks at 93.8 (Cp), 86.0, and 24.8 (η^4 -C₆H₈) ppm, similar to those observed for pure **1**. The resonances of the CO carbons appear as a single peak at 222.2 ppm, shifted upfield by 7.5 ppm compared to that for the organometallic **1**. Comparable results were obtained with β -CD/CpMo(η^3 -C₆H₇)(CO)₂ (**3a**), for which the ¹³C resonance of the Cp group appeared as a single line at 91.4 ppm. No well-

(26) Calhorda, M. J. *Chem. Commun.* **2000**, 801.

(27) Gidley, M. J.; Bociek, S. M. *J. Am. Chem. Soc.* **1988**, *110*, 3820.

(28) Heyes, S. J.; Clayden, N. J.; Dobson, C. M. *Carbohydr. Res.* **1992**, *233*, 1.

(29) Veregin, R. P.; Fyfe, C. A.; Marcessault, R. H.; Tayler, M. G. *Carbohydr. Res.* **1987**, *160*, 41.

(23) Kraus, W.; Nolze, G. *J. Appl. Crystallogr.* **1996**, *29*, 301.

(24) Saenger, W.; Steiner, T. *Acta Crystallogr.* **1998**, *A54*, 798.

(25) Sabapathy, R. C.; Bhattacharyya, S.; Cleland, W. E.; Hussey, C. L. *Langmuir* **1998**, *14*, 3797, and literature cited therein.

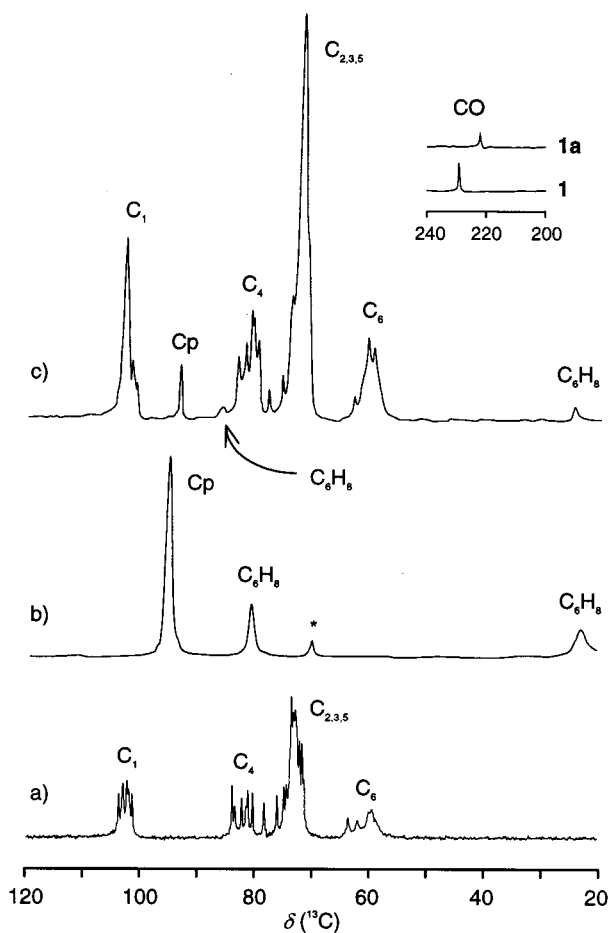


Figure 3. Solid-state ^{13}C CP MAS NMR spectra of (a) β -CD hydrate, (b) $[\text{CpMo}(\eta^4\text{-C}_6\text{H}_8)(\text{CO})_2][\text{BF}_4]$ (**1**), and (c) β -CD/ $[\text{CpMo}(\eta^4\text{-C}_6\text{H}_8)(\text{CO})_2][\text{BF}_4]$ (**1a**). An asterisk denotes a spinning side band.

defined line could however be discerned for the resonances of the CO carbons.

In the ^{13}C CP MAS NMR spectra of β -CD/ $[\text{IndMo}(\eta^4\text{-C}_6\text{H}_8)(\text{CO})_2][\text{BF}_4]$ (**2a**) and β -CD/ $[\text{IndMo}(\eta^3\text{-C}_6\text{H}_7)(\text{CO})_2][\text{BF}_4]$ (**4a**), each carbon resonance of β -CD shows multiple peaks with a higher resolution than that found for **1a** and **3a**. Indeed, the spectra of **2a** and **4a** are quite similar to that previously reported for pristine β -CD hydrate,²⁸ indicating that the macrocyclic conformations are comparable. The organometallic components in **2a** and **4a** give rise to only very weak peaks relative to those of cyclodextrin, as expected from the low guest:host ratio.

3. Ab Initio Calculations. Ab initio calculations for the organometallics **1–4** yielded molecular structures in agreement with the available X-ray data for similar systems.³⁰ The presence of a single hapticity conformer experimentally observed for **4** is also predicted from the calculations since the structures with η^3 -indenyl always slip to η^5 -indenyl during geometry optimization.

An interesting feature is revealed by the calculated vibrational spectra: while the observed wavenumbers of the ring ligands are generally well predicted for the organometallics, the calculated scaled wavenumbers of

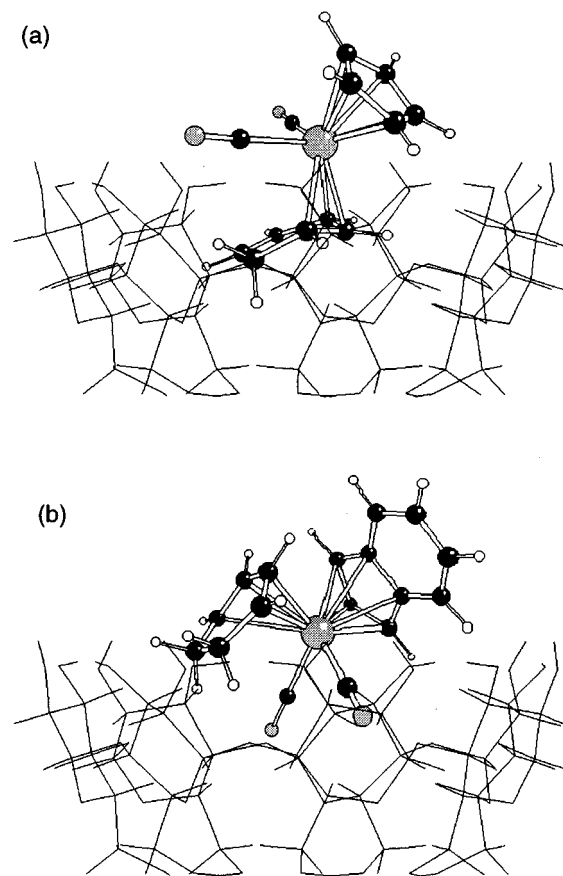


Figure 4. Schematic representation of the lowest energy structures found for the inclusion compounds (a) β -CD/ $[\text{CpMo}(\eta^3\text{-C}_6\text{H}_7)(\text{CO})_2]$ (**3a**) and (b) β -CD/ $[\text{IndMo}(\eta^4\text{-C}_6\text{H}_8)(\text{CO})_2][\text{BF}_4]$ (**2a**).

the carbonyl ligands stretching modes are blue-shifted, approaching the experimental values for the inclusion compounds (Table 1). Since the ab initio calculations refer to the isolated molecule, this observation supports the presence of intermolecular interactions involving the carbonyl groups in the crystalline solids **1–4** and the absence of such interactions in the inclusion compounds.

For the η^5 -cyclopentadienyl analogues **1** and **3**, the best organometallic- β -CD interaction geometry was found to be with the C6-ring ligand inside the cavity, as shown in Figure 4a. Such geometry allows the partial inclusion of the remaining ligands in the cavity of a second CD, yielding a channel-type structure, with a head-to-head arrangement of the CDs, as previously found for similar systems with 2:1 stoichiometry.^{7c} It should be mentioned that the interaction geometries allowing hydrogen bonding between the carbonyl ligands and the hydroxyl groups of the CD have been tested but were not found among the most stable ones at this level of calculation.

In what concerns the organometallics **2** and **4**, the presence of the indenyl ligand (instead of Cp) reduces the stability of a similar inclusion geometry (due to the steric hindrance between Ind and the rim of CD). The lowest energy organometallic- β -CD geometry found presents the two carbonyl ligands inside the CD cavity [Figure 4b]. This geometry, however, is not favorable to the approach of a second CD due to the orientation of the indenyl ligand. Nevertheless, the inclusion inside the cavities of two head-to-head CDs is possible with

(30) Azevedo, C. G. de; Calhorda, M. J.; Carrondo, M. A. A. F. d. C. T.; Dias, A. R.; Duarte, M. T.; Galvão, A. M.; Gamelas, C. A.; Gonçalves, I. S.; Piedade, F. M. da; Romão, C. C. *J. Organomet. Chem.* **1997**, *544*, 257.

less stable organometallic- β -CD interaction geometries. Although it is not possible from these calculations to decide on the 2:1 or 1:1 stoichiometry of the inclusion compounds of **2** and **4**, the steric hindrance arising from the presence of the indenyl ligand seems to be a possible explanation for the experimentally observed lower stability of these compounds relative to the inclusion compounds of **1** and **3**.

Conclusion

We have shown that β -cyclodextrin forms stable 2:1 channel-type inclusion compounds selectively with the dicarbonyl complexes $[\text{CpMo}(\eta^4\text{-C}_6\text{H}_8)(\text{CO})_2][\text{BF}_4]$ and $\text{CpMo}(\eta^3\text{-C}_6\text{H}_7)(\text{CO})_2$. Less stable β -CD adducts are formed with the corresponding indenyl analogues of these molybdenum complexes. The ab initio calculations provide valuable insight into the possible inclusion geometries and hence the relative stabilities of the cyclodextrin complexes. Organometallic complexes such as the 18-electron cation $[\text{CpMo}(\eta^4\text{-C}_6\text{H}_8)(\text{CO})_2]^+$ are of considerable interest in organic synthesis because they undergo sequential stereospecific nucleophilic additions on the coordinated diene. It should be of interest to study this reaction chemistry when the complexes are encapsulated within a chiral host molecule, in this case β -cyclodextrin. Although the cyclodextrin complexes are insoluble in common organic solvents, the possibility of carrying out heterogeneous reactions cannot be ruled out. These studies are in progress in our laboratories.

Experimental Section

General Methods and Procedures. All air-sensitive reactions and manipulations were performed using standard Schlenk techniques under an oxygen-free and water-free nitrogen atmosphere. Solvents were dried by standard procedures (THF and Et₂O over Na/benzophenone ketyl; CH₂Cl₂ and NCMe over CaH₂), distilled under nitrogen, and kept over 4 Å molecular sieves (3 Å for NCMe). β -CD was obtained from Wacker Chemie (München) and recrystallized before use.

Microanalyses were performed at the TU Munich by M. Barth and co-workers. Infrared spectra were recorded on a Unicam Mattson Mod 7000 FTIR spectrophotometer in solution (CH₂Cl₂) or as KBr pellets. TGA studies were performed using a Mettler TA3000 system at a heating rate of 5 K/min under a static atmosphere of air. Powder XRD data were collected on a Philips X'pert diffractometer using Cu K α radiation filtered by Ni ($\lambda = 1.5418$ Å). ¹H NMR spectra were measured in solution using a Bruker CXP 300 spectrometer. Room-temperature solid-state ¹¹B and ¹³C NMR spectra were recorded at 128.4 and 100.6 MHz, respectively, on a (9.4 T) Bruker MSL 400P spectrometer. ¹¹B MAS NMR spectra were recorded with short 0.6 μ s (15°) pulses, spinning rates of 7 kHz, and 2 s recycle delays. Chemical shifts are quoted in parts per million from (C₂H₅O)₂OBF₃. ¹³C CP MAS NMR spectra were recorded with a 4.5 μ s ¹H 90° pulse, 2 ms contact time, a spinning rate of 9 kHz, and 7 s recycle delays. Chemical shifts are quoted in parts per million from TMS.

General Preparation of $[\text{Cp}'\text{Mo}(\eta^4\text{-C}_6\text{H}_8)(\text{CO})_2][\text{BF}_4]$ [$\text{Cp}' = \text{Cp}$ (1**), **Ind** (**2**)].** A solution of $\text{Cp}'\text{Mo}(\eta^3\text{-C}_6\text{H}_7)(\text{CO})_2$ (1.0 g) in CH₂Cl₂ (30 mL) was treated with 1 equiv of HBF₄·Et₂O. After 15 min, excess 1,3-cyclohexadiene (3 mL) was added and the reaction mixture was allowed to stand for 3 h. After concentration to ca. 10 mL and addition of a mixture of hexane/Et₂O, the yellow precipitate formed was recovered by filtration and washed with diethyl ether.

$[\text{CpMo}(\eta^4\text{-C}_6\text{H}_8)(\text{CO})_2][\text{BF}_4]$ (1**).** IR and ¹H NMR data were in agreement with those in refs 18 and 19g. ¹³C CP MAS

NMR: δ 229.7 (s, CO), 95.7 (s, Cp), 81.0 (s, C₆H₈), 23.6 (s, C₆H₈). ¹¹B MAS NMR: δ -1.4 (s).

$[\text{IndMo}(\eta^4\text{-C}_6\text{H}_8)(\text{CO})_2][\text{BF}_4]$ (2**).** Recrystallization from CH₂Cl₂/Et₂O. Yield: 1.3 g (92%). Elemental analysis (EA) and ¹H NMR data were in agreement with those in ref 21. Selected IR (KBr, cm⁻¹): 3074 m, 1999 vs (ν (CO)), 1941 vs (ν (CO)), 1448 m, 1339 m, 1083 vs, 1031 vs, 872 m, 766 s, 579 m, 534 m, 507 m, 449 m. ¹³C CP MAS NMR: δ 229.9 (s, CO), 132.4, 127.8, 122.3, 115.2, 108.7 (Ind), 93.8 (br, C₆H₈), 84.7, 78.3 (Ind), 25.1 (s, C₆H₈). ¹¹B MAS NMR: δ -1.0 (s).

General Preparation of $\text{Cp}'\text{Mo}(\eta^3\text{-C}_6\text{H}_7)(\text{CO})_2$ [$\text{Cp}' = \text{Cp}$ (3**), **Ind** (**4**)].** A solution of $[\text{Cp}'\text{Mo}(\eta^4\text{-C}_6\text{H}_8)(\text{CO})_2][\text{BF}_4]$ (1.0 g) in CH₂Cl₂ (30 mL) was treated with excess NEt₃ (1 mL) for 1 h. The resulting reaction mixture was then evaporated to dryness, and the residue extracted with hexane. After being concentrated and cooled, the yellow crystalline complex was isolated.

$\text{CpMo}(\eta^3\text{-C}_6\text{H}_7)(\text{CO})_2$ (3**).** EA and ¹H NMR data were in agreement with those of ref 17d. ¹³C CP MAS NMR: δ 237.0 (br, CO), 132.1 (br, C₆H₇), 116.9 (d, C₆H₇), 92.3 (s, Cp), 60.3 (br, C₆H₇), 52.1 (br, C₆H₇), 40.5 (br, C₆H₇), 28.2 (br, C₆H₇).

$\text{IndMo}(\eta^3\text{-C}_6\text{H}_7)(\text{CO})_2$ (4**).** Recrystallization from hexane/Et₂O. Yield: 0.72 g (90%). Found: C, 58.69; H, 3.98. Anal. Calcd for C₁₇H₁₄O₂Mo (346.24): C, 58.97; H, 4.08. IR (KBr, cm⁻¹): 3198 m, 1932 vs (ν (CO)), 1839 vs (ν (CO)), 1443 m, 1423 m, 1389 m, 1337 m, 818 s, 749 s, 716 s, 630 s, 574 s, 485 s, 460 m. ¹H NMR (CDCl₃, 300 MHz, 25 °C): δ 7.05 (s, 4H, H₅₋₈), 6.01 and 5.87 (2s, 1H each, H₁ and H₃), 5.53 (t, 1H, H₂), 5.97–5.89 (m, 1H), 4.50–4.47 (m, 1H), 3.49–3.43 (m, 3H) and 2.39–2.37 (m, 2H), together 7H (C₆H₇). ¹³C CP MAS NMR: δ 240.5 (s, CO), 132.3 (d, C₆H₇), 124.4 (s, Ind), 119.2 (br, C₆H₇), 111.7 (br, Ind), 89.5 (s, Ind), 80.5 (s, C₆H₇), 75.8 (s, Ind), 65.1, 58.5, 29.7 (br, C₆H₇).

Preparation of β -CD/ $[\text{CpMo}(\eta^4\text{-C}_6\text{H}_8)(\text{CO})_2][\text{BF}_4]$ (1a**).** A solution of β -CD hydrate (0.34 g, 0.30 mmol) in water (4.5 mL) was treated with a solution of $[\text{CpMo}(\eta^4\text{-C}_6\text{H}_8)(\text{CO})_2][\text{BF}_4]$ (0.05 g, 0.13 mmol) in CH₂Cl₂ (3 mL) and the mixture kept at 60 °C for 2 h. After evaporation of the CH₂Cl₂ and addition of ethanol (2 mL), the mixture was stirred for 24 h at room temperature. The suspension was filtered and the pale yellow powder washed several times with CH₂Cl₂ and water and vacuum-dried. Yield: 0.23 g (62%). Found: C, 40.43; H, 6.20; Mo, 3.49. Anal. Calcd for (C₁₃H₁₃O₂BF₄Mo)·2(C₄₂H₇₀O₃₅)·12H₂O: C, 40.59; H, 6.22; Mo, 3.34. IR (KBr, cm⁻¹): 3381 vs, 2924 s, 2017 vs (ν (CO)), 1863 vs (ν (CO)), 1417 m, 1368 m, 1334 m, 1157 vs, 1083 vs, 1029 vs, 938 s, 861 m, 755 m, 704 m, 608 m, 575 s, 529 m, 446 m, 363 m. ¹³C CP MAS NMR: δ 222.2 (s, CO), 103.7, 102.3, 101.5 (β -CD, C-1), 93.8 (s, Cp), 85.9 (br, C₆H₈), 83.7, 82.8, 82.3, 81.5, 80.8, 78.3 (β -CD, C-4), 75.9, 74.5, 73.0 (β -CD, C-2,3,5), 63.5, 61.9, 61.1, 59.9 (β -CD, C-6), 24.8 (s, C₆H₈). ¹¹B MAS NMR: δ -1.5 (s).

Reaction of β -CD with $[\text{IndMo}(\eta^4\text{-C}_6\text{H}_8)(\text{CO})_2][\text{BF}_4]$ (2a**).** A solution of β -CD (0.61 g, 0.54 mmol) in water (8.2 mL) was treated with a solution of $[\text{IndMo}(\eta^4\text{-C}_6\text{H}_8)(\text{CO})_2][\text{BF}_4]$ (0.1 g, 0.23 mmol) in CH₂Cl₂ (5.8 mL), and the mixture was kept at 60 °C for 48 h. After evaporation of the CH₂Cl₂, the suspension was filtered and the pale yellow powder washed several times with CH₂Cl₂ and water and vacuum-dried. Found: C, 41.00; H, 6.23; Mo, 1.45. Anal. Calcd for (C₁₇H₁₅O₂BF₄Mo)·2(C₄₂H₇₀O₃₅)·12H₂O: C, 41.54; H, 6.18; Mo, 3.29. IR (KBr, cm⁻¹): 3375 vs, 2925 s, 2044 vs (ν (CO)), 1997 vs (ν (CO)), 1415 m, 1368 m, 1334 m, 1157 vs, 1080 vs, 1029 vs, 860 m, 755 m, 706 m, 608 m, 577 s, 531 m, 435 m, 363 m. ¹³C CP MAS NMR: δ 121.8, 119.2, 110.3 (Ind), 103.7, 103.1, 102.3, 101.5 (β -CD, C-1), 90.2 (br, C₆H₈), 86.2, 81.8 (Ind), 83.9, 83.3, 82.1, 80.2, 80.2, 78.1 (β -CD, C-4), 75.9, 74.8, 73.0, 72.1, 71.6 (β -CD, C-2,3,5), 63.5, 61.9, 59.9, 59.3 (β -CD, C-6), 24.8 (br, C₆H₈). ¹¹B MAS NMR: δ -1.7 (s).

Preparation of β -CD/ $\text{CpMo}(\eta^3\text{-C}_6\text{H}_7)(\text{CO})_2$ (3a**).** A solution of β -CD (0.77 g, 0.68 mmol) in water (18 mL) was treated with a solution of $\text{CpMo}(\eta^3\text{-C}_6\text{H}_7)(\text{CO})_2$ (0.1 g, 0.34 mmol) in

CH_2Cl_2 (14 mL), and the mixture was kept at 40 °C for 8 h. After evaporation of the CH_2Cl_2 , the suspension was filtered and the pale yellow powder washed several times with CH_2Cl_2 and water and vacuum-dried. Yield: 0.43 g (45%). Found: C, 41.08; H, 6.35; Mo, 3.26. Anal. Calcd for $(\text{C}_{13}\text{H}_{12}\text{O}_2\text{Mo}) \cdot 2(\text{C}_{42}\text{H}_{70}\text{O}_{35}) \cdot 14\text{H}_2\text{O}$: C, 41.33; H, 6.44; Mo, 3.40. IR (KBr, cm^{-1}): 3382 vs, 2923 s, 1940 vs ($\nu(\text{CO})$), 1865 vs ($\nu(\text{CO})$), 1642 s, 1415 m, 1368 m, 1334 m, 1157 vs, 1083 vs, 1029 vs, 861 m, 755 m, 706 m, 609 m, 576 s, 530 m, 405 m, 362 m. ^{13}C CP MAS NMR: δ 128.1 (br, C_6H_7), 113.6 (br, C_6H_7), 103.2, 102.2, (β -CD, C-1), 91.4 (s, Cp), 83.6, 81.2, 80.2, 78.3 (β -CD, C-4), 72.9 (β -CD, C-2,3,5), 63.3, 61.8, 59.9 (β -CD, C-6), 52.6 (br, C_6H_7), 41.2 (br, C_6H_7), 29.1 (br, C_6H_7).

Reaction of β -CD with $\text{IndMo}(\eta^3\text{-C}_6\text{H}_7)(\text{CO})_2$ (4a). A solution of β -CD (0.66 g, 0.58 mmol) in water (12.5 mL) was treated with a solution of $\text{IndMo}(\eta^3\text{-C}_6\text{H}_7)(\text{CO})_2$ (0.1 g, 0.29 mmol) in CH_2Cl_2 (5.8 mL), and the mixture was kept at 50 °C for 48 h. After evaporation of the CH_2Cl_2 , the suspension was filtered and the pale yellow powder washed several times with CH_2Cl_2 and water and vacuum-dried. Found: C, 40.42; H, 6.51; Mo, 1.81. Anal. Calcd for $(\text{C}_{17}\text{H}_{14}\text{O}_2\text{Mo}) \cdot 2(\text{C}_{42}\text{H}_{70}\text{O}_{35}) \cdot 12\text{H}_2\text{O}$: C, 42.83; H, 6.33; Mo, 3.39. IR (KBr, cm^{-1}): 3396 vs, 2924 s, 1940 vs ($\nu(\text{CO})$), 1869 vs ($\nu(\text{CO})$), 1415 m, 1368 m, 1335 m, 1157 vs, 1083 vs, 1029 vs, 861 m, 755 m, 706 m, 608 m, 575 s, 529 m, 406 m, 361 m. ^{13}C CP MAS NMR: δ 128.6–120.3 (br, $\text{C}_6\text{H}_7 + \text{Ind}$), 113.8 (Ind), 103.0, 102.5, 101.4 (β -CD, C-1), 90.2 ($\text{C}_6\text{H}_7/\text{Ind}$), 84.0, 81.2, 78.1 (β -CD, C-4/ C_6H_7), 76.0, 72.8, (β -CD, C-2,3,5/Ind), 63.5, 60.1, (β -CD, C-6/ C_6H_7), 30.2 (br, C_6H_7).

Ab Initio Calculations. Ab initio calculations were performed using the G98w program package³¹ running on a personal computer (Pentium 400, 320 MB RAM). For the free organometallics, the geometry was fully optimized at the HF and B3LYP levels using the Dunning/Huzinaga valence double- ζ basis set for the first period elements³² and the Effective Core Potentials of Hay and Wadt with double- ζ splitting³³ for the Mo atom, as implemented in G98 (LanL2DZ option). Harmonic vibrational frequencies were calculated at the HF/

LanL2DZ level, using analytic second derivatives. For comparison with the experimental values, the large size of the system required a different approach and the calculated wavenumbers were scaled by the standard factor of 0.89.³⁴

In what concerns the inclusion compounds, several possible inclusion geometries were tested by single-point calculations using the two-layer approximation of Morokuma et al.³⁵ as implemented in G98 (ONIOM keyword). The organometallics were treated at high layer, using the effective core potentials described above (HF/LanL2DZ) while the β -CD was set as the low layer and optimized at the semiempirical AM1 level.³⁶

Acknowledgment. We are grateful to PRAXIS XXI for funding.

OM001088S

(31) Frisch, M. J.; Trucks, G. W.; Schlegel, H. B.; Scuseria, G. E.; Robb, M. A.; Cheeseman, J. R.; Zakrzewski, V. G.; Montgomery, J. A.; Stratmann, R. E.; Burant, J. C.; Dapprich, S.; Millam, J. M.; Daniels, A. D.; Kudin, K. N.; Strain, M. C.; Farkas, O.; Tomasi, J.; Barone, V.; Cossi, M.; Cammi, R.; Mennucci, B.; Pomelli, C.; Adamo, C.; Clifford, S.; Ochterski, J.; Petersson, G. A.; Ayala, P. Y.; Cui, Q.; Morokuma, K.; Malick, D. K.; Rabuck, A. D.; Raghavachari, K.; Foresman, J. B.; Cioslowski, J.; Ortiz, J. V.; Stefanov, B. B.; Liu, G.; Liashenko, A.; Piskorz, P.; Komaromi, I.; Gomperts, R.; Martin, R. L.; Fox, D. J.; Keith, T.; Al-Laham, M. A.; Peng, C. Y.; Nanayakkara, A.; Gonzalez, C.; Challacombe, M.; Gill, P. M. W.; Johnson, B. G.; Chen, W.; Wong, M. W.; Andres, J. L.; Head-Gordon, M.; Replogle, E. S.; Pople, J. A.; *Gaussian 98 (Revision A.1)*; Gaussian, Inc.: Pittsburgh, PA, 1998.

(32) Dunning, T. H., Jr.; Hay, P. J. In *Modern Theoretical Chemistry*; Schaefer, H. F., Ed.; Plenum: New York, 1976; Vol. 3, p1.

(33) Wadt, W. R.; Hay, P. J. *J. Chem. Phys.* **1985**, *82*, 284.

(34) Heyne, W. J.; Radom, L.; Pople, J. A.; Schleyer, P. R. *Ab Initio Molecular Orbital Theory*; Wiley: New York, 1986.

(35) (a) Humbel, S.; Sieber, S.; Morokuma, K. *J. Chem. Phys.* **1996**, *105*, 1959. (b) Matsubara, T.; Sieber, S.; Morokuma, K. *J. Quantum Chem.* **1996**, *60*, 1101. (c) Svensson, M.; Humbel, S.; Froese, R. D. J.; Matsubara, T.; Sieber, S.; Morokuma, K. *J. Phys. Chem.* **1996**, *100*, 19357.

(36) Dewar, M. J. S.; Reynolds, C. H. *J. Comput. Chem.* **1986**, *2*, 140.